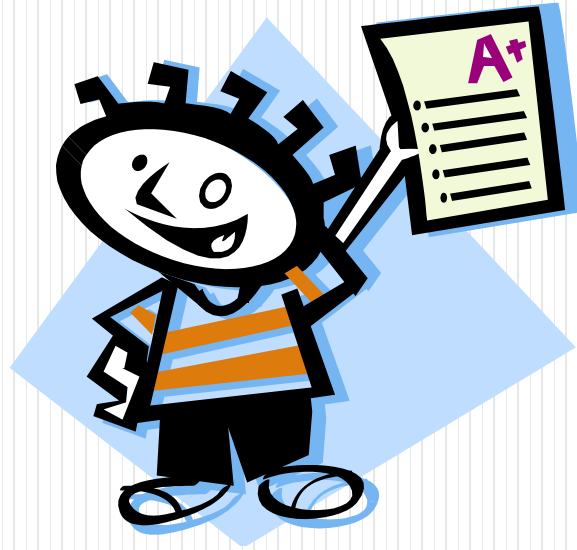


# GRADING THE EXTENDED ESSAY



# ASSESSMENT CRITERIA

- **A – research question (graded 0-2)**
- **B – introduction (graded 0-2)**
- **C – investigation (graded 0-4)**
- **D – knowledge and understanding of the topic stated (graded 0-4)**
- **E – reasoned argument (graded 0-4)**
- **F – application of analytical and evaluative skills appropriate to the subject (graded 0-4)**
- **G – use of language appropriate to the subject (graded 0-4)**
- **H – conclusion (graded 0-2)**
- **I – formal presentation (graded 0-4)**
- **J – abstract (graded 0-2)**
- **K – holistic judgment (graded 0-4)**

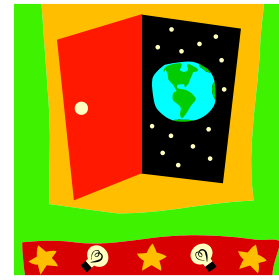


# RESEARCH QUESTION



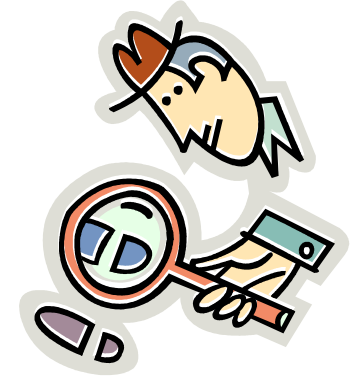
- This criterion assesses the extent to which the purpose of the essay is specified.
- In most subjects the aim of the essay will normally be expressed as a question. Certain disciplines permit different ways of formulating the research task.
- Graded 0 – 1 – 2
- In order to get a 2, your research question must be clearly stated in the introduction and sharply focused.

# INTRODUCTION



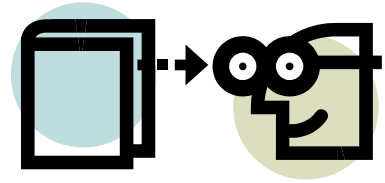
- This criterion assesses the extent to which the introduction makes clear how the research question relates to existing knowledge on the topic.
- It explains how the topic chosen is significant and worthy of investigation.
- Graded 0 – 1 – 2
- In order to get a 2 the context of the research question needs to be clearly demonstrated. The introduction clearly explains the significance of the topic and why it is worthy of investigation.

# INVESTIGATION



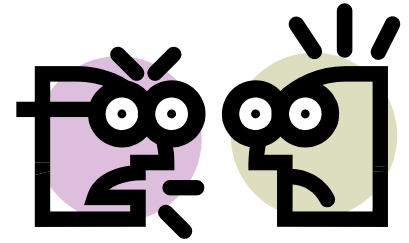
- This criterion assesses the extent to which the investigation is planned
- An appropriate range of sources has been consulted or data gathered relevant to the research question
- Where the research question does not lend itself to the systematic investigation in the subject in which the essay is registered, the maximum level awarded is 2.
- Graded 0 – 1 – 2 – 3 – 4
- In order to get a 4 an imaginative range of appropriate sources has been consulted, or data has been gathered, and relevant material has been carefully selected.

# KNOWLEDGE AND UNDERSTANDING OF THE TOPIC



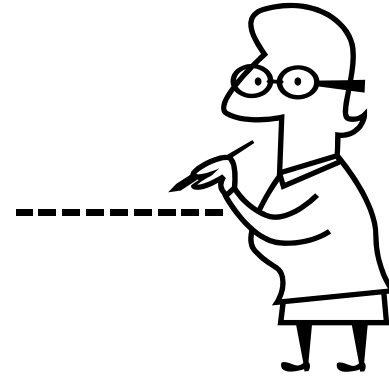
- This criterion assesses how well the candidate has related the investigation to the principles of inquiry
- Where the research questions does not lend itself to a systematic investigation in the subject in which the essay is registered, the maximum level awarded is 2.
- Graded 0 – 1 – 2 – 3 -- 4
- In order to get a 4 the essay must demonstrate very good knowledge and understanding of the topic. It clearly and precisely locates the investigation in an academic context.

# REASONED ARGUMENT



- This criterion assesses the extent to which the essay uses the material collected to present ideas in a logical and coherent manner.
- Is a reasoned argument developed in relation to the research question?
- Where the research question does not lend itself to a systematic investigation in the subject the maximum level awarded is 2.
- Graded 0 – 1 – 2 – 3 – 4
- In order to get a 4 ideas must be presented clearly and in a logical manner. Successful development of a reasoned and convincing argument in relation to the research question is apparent.

# APPLICATION OF ANALYTICAL AND EVALUATIVE SKILLS APPROPRIATE TO THE SUBJECT

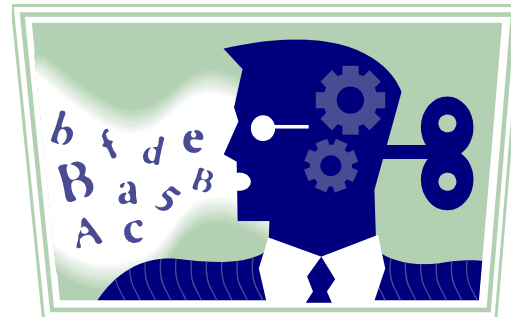


- Graded 0 – 1 – 2 – 3 – 4
- In order to get a 4 the essay must show effective and sophisticated application of appropriate analytical and evaluative skills



# USE OF LANGUAGE APPROPRIATE TO THE SUBJECT

- Graded 0 – 1 – 2 – 3 – 4
- In order to get a 4 the language used must clearly and precisely communicate ideas. It must use terminology appropriate to the subject with skill and understanding.



# CONCLUSION



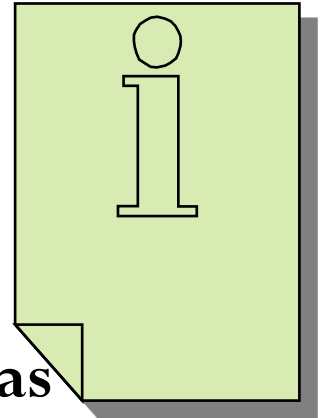
- This criterion assesses the extent to which the essay incorporates a conclusion that is relevant to the research question.
- It must be consistent with the evidence presented.
- Graded 0 – 1 – 2
- In order to get a 2 an effective conclusion must be clearly stated; is relevant to the research question and consistent with the evidence presented in the essay.
- It should include unresolved questions where appropriate.

# FORMAL PRESENTATION



- This criterion assesses the extent to which to layout, organization, appearance and formal elements of the essay consistently follow a standard format.
- Formal elements include: title page, table of contents, page numbers, illustrative material, quotations, documentation (references, citations, and bibliography) and appendices.
- Graded 0 – 1 – 2 – 3 – 4
- In order to get a 4 the formal presentation must be excellent.

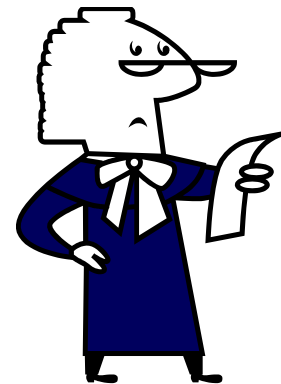
# ABSTRACT



- The requirements for the abstract are for it to clearly state the research question that was investigated, how the investigation was undertaken and the conclusion(s) of the essay.
- Grade 0 – the abstract exceeds 300 words, is extremely short or one or more of the above elements is missing.
- Grade 1 – the abstract contains the elements listed above but they are not clearly stated.
- Grade 2 – the abstract clearly states all the elements listed above.

# HOLISTIC JUDGMENT

- The purpose of this criterion is to assess the qualities that distinguish an essay from the average such as intellectual initiative, depth of understanding and insight.
- Graded 0 – 1 – 2 – 3 – 4
- In order to get a 4 the essay must show considerable evidence of such qualities.



# SCORING

- **A: 30-36**
- **B: 25-29**
- **C: 17-24**
- **D: 9-16**
- **E: 0-8**



- **In order for an IB candidate to be awarded his/her diploma he/she must have a C or better on the extended essay or 28 points.**

# BIBLIOGRAPHY

- **International Baccalaureate Organization. *IBO Diploma Programme Extended essay Guide.* Cardiff, Wales GB: The International Baccalaureate Organization. 2007.**